

# We're on the Same Team

Module 3



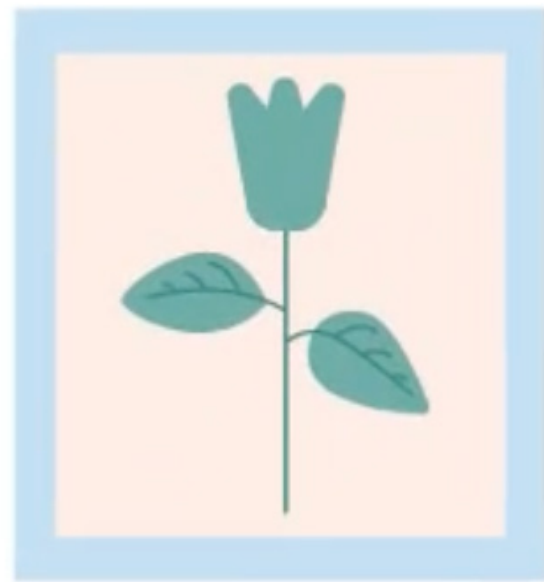
This Module provides new ideas to think about (**KNOW**), time to visualize the ideas in action (**SEE**), a space to think and wonder about what has been experienced (**REFLECT**), and ideas for what you can put into practice right away (**ACTION**).



**Let's continue this journey of understanding  
and nurturing early relational health.**

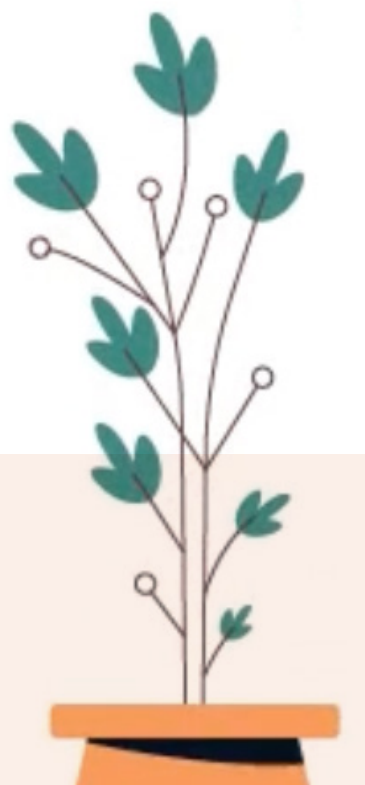
Building Partnerships Between Providers and  
Parents: A Relational Alliance

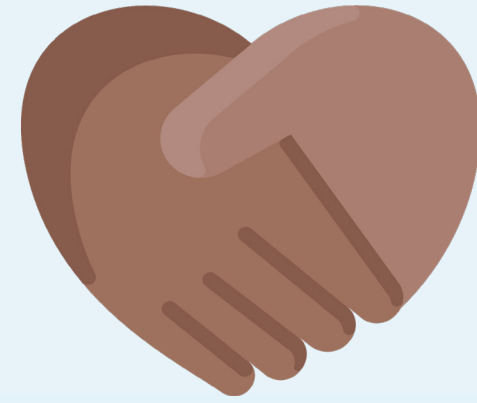




## **This module relates to four of the foundational principles of the early relational health paradigm:**

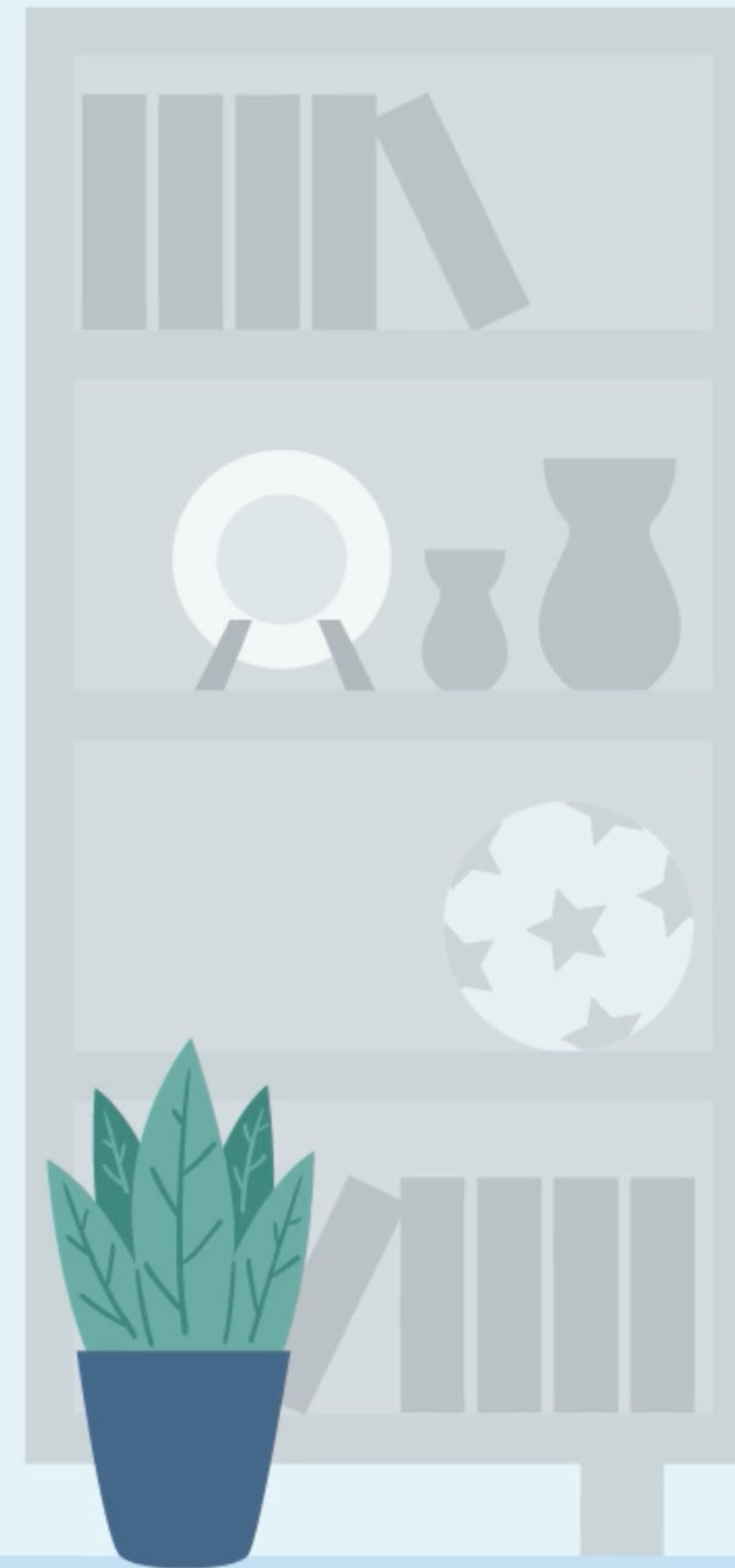
- Research and practice are strengthened by integrating family experience and cultural wisdom into the science of early childhood development (#3)
- A broad range of helping professionals and community members can provide experiences which promote early relational health. (#7)
- Collaborative decision-making and power-sharing between families and early relational health professionals can lead to better outcomes for children and parents. (#8)
- Early relational health embraces diversity of practices and knowledge and resists reductionism about human development.





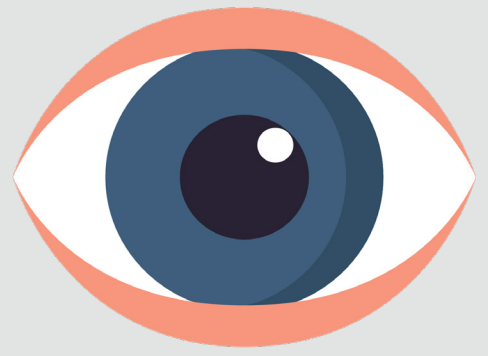
# KNOW

Keep the focus on  
the relationship



- **For providers:** Think of the family as your client.
- **For parents:** Think of the provider as your partner in raising your child.
- Every member of the team has the child's best interest at heart, we are all on the team to help the babies, toddlers and their families thrive.
- It's important to recognize where our roles and the roles of others meet together in service of a thriving family.
- Don't be afraid to really get to know each other. Continue to learn and seek to understand the culture of each family—be curious about relationship values.

# SEE





# REFLECT

Let's take time now to reflect on what we learned in the **KNOW** section and what we saw in the video.

As you think about an infant or toddler in your life, how do you envision everyone working together as a team to support their unique needs?

How might others support the relationship that you as a parent have with your child or as you as a provider have with a family?

Source: [nurtureconnection.org/resource/early-relational-health-ecosystem/](https://nurtureconnection.org/resource/early-relational-health-ecosystem/)





# REFLECT

## Providers

### **What does strength-based relationship-building look like?**

Have you ever struggled to create this connection with those you support?

What was present for you and how did you get to repair?

What was most helpful?



# REFLECT

## Providers

**Think of ways that you will begin, or continue to focus on, a trusting parent/provider relationship.**

Reflect on how you are in relationships with others.

How might this impact the alliance with a family?

Share roles: How do we want to work together?



# REFLECT

## Parents

**What does strength-based relationship-building look like?**

Think about a way someone honored your strengths when you needed support.

What did that look like?

What did it feel like and what actions made the interaction feel supportive?



# REFLECT

## Parents

**Think of ways that you will begin, or continue to focus on, a trusting parent/provider relationship.**

How do you celebrate relationships within your own family and with other parents and providers that support the “team”?



# TAKE ACTION

**Take Action by pulling “Your Team” together to brainstorm your families’ unique needs for successful alliance connections.**

**How? There are many ways.**

- 1.** Call, text, or share this information with loved ones who will benefit. Follow up to hear what they’ve learned.
- 2.** Set up an informal meeting with families or providers to talk about Early Relational Health and who helps to promote and support these practices.
- 3.** Reflect on who all are key and/or supporting players on “Your Team”. Share with them your gratitude!



For more information and to continue learning about Early Relational Health, you can find information at

**NurtureConnection.org**

and the Infant and Early Childhood Mental Health Consultation Tab on the MI Department of Health and Human Services Website

**MichiganIECMH.org**

